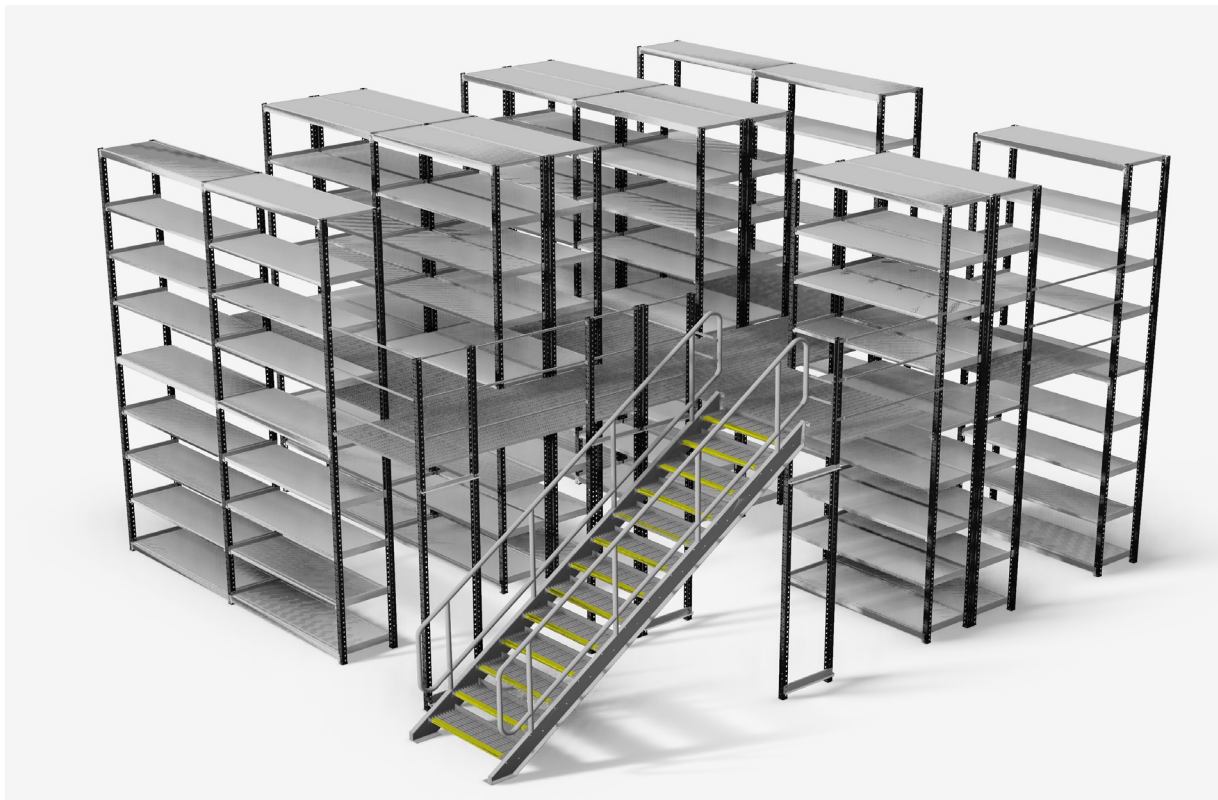


# Dexion | Ultima LT - 2 Tier



## Product overview

Dexion Ultima LT - 2 Tier is a modular and versatile shelving solution developed for multi-level hand-loaded light duty storage. The shelving system is ideal for an extensive variety of applications, maximising building footprint and expanding storage capacity.

The 2 Tier shelving system uses a heavy duty mezzanine floor ensuring strength and stability of the storage structure. By building a two level storage solution, storage capacity greatly increases without needing extra floorspace.

The intelligent design allows for quick and easy installation while ensuring the flexibility to expand or re-configure as required. The Dexion Ultima LT can also be customised to suit your specific needs with various accessories.

## Key features and benefits

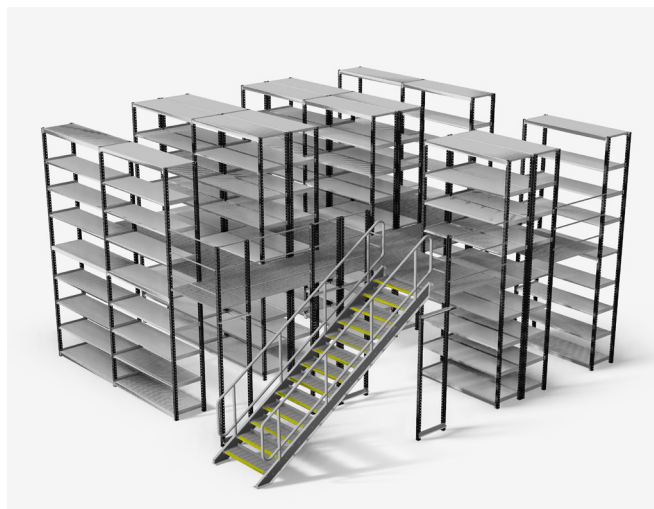
- Engineered for durability, strength and stability
- Immediately adds an extra level of floorspace within an existing premises
- The cost effective shelving solution provides effective storage for boxes, cartons, totes, maxi-bins, archive files and a range of other light-duty items.
- An attractive and modern finish that is easily customisable for industrial and commercial applications
- Modular design facilitates expansion or reconfiguration easily
- Shelves rest on brackets providing for easy assembly
- Simple system makes it quick and easy to install
- Complete range of accessories to meet any storage need

# Dexion | Ultima *LT* - 2 Tier

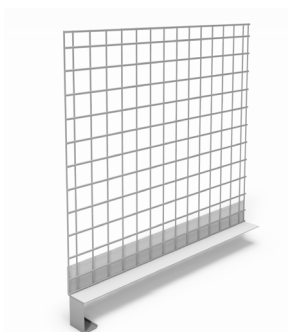
## Technical specifications

System Type	Static Two Tier
Shelving Bay Height	1600mm
	1900mm
	2200mm
	2500mm
Shelving Depth	400mm
	600mm
Shelf Width	900mm
	1000mm
	1200mm
	1500mm
	1800mm
	2000mm
Shelf Pitch	50mm
Standard Colour	Stone white (Beams & Shelves)
	Anthracite (Uprights)
	Galvanised (Floor Grating)

\*Uniformly distributed load. Shelf, beam and bay capacities vary, contact your Dexion representative for specific maximum loads based on your configuration.



## Accessories



Mesh Dividers

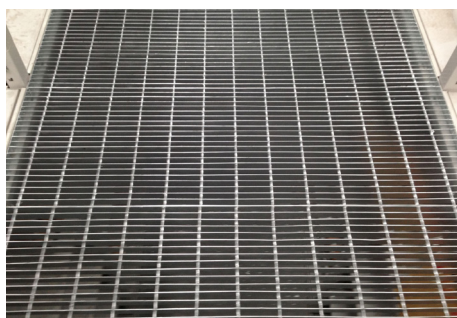


Panel Dividers

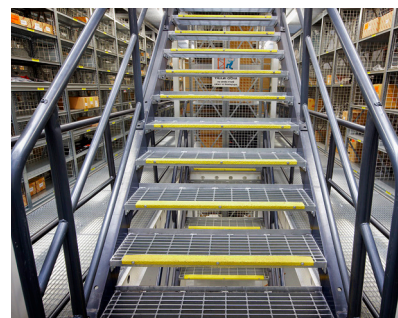
## 2 Tier Components



Hand Rails



Mesh Grating Floors



Stair Cases

## Contact

For more information on the Dexion Ultima *LT* - 2 Tier, please contact us on +603 5520 6000.

### Disclaimer:

The Information contained herein is the intellectual property of Dexion. The Information is defined to include: data, text, images, specification, graphics, design details and any and all other information whatsoever contained herein. The Information has been produced exclusively for Dexion and may not be used for any other purpose. None of the information may be used, altered, edited, copied, distributed or duplicated in any way without the express written consent of Dexion. Whilst the utmost care is taken to ensure the accuracy of the information contained herein, Dexion makes no guarantee as to its accuracy. Dexion shall, under no circumstances, be liable for any costs, losses, expenses or damages which may in any way be attributable to the use or adoption of such data and/or design details. All dimensions indicated are nominal only. Dexion reserves the right to alter or amend any of the information herein, including data and design details, without prior notice.