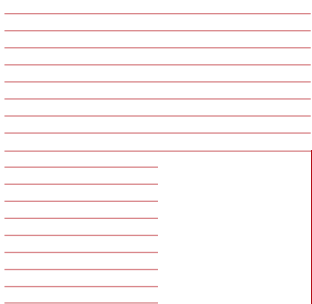


Museum Solutions



 **bruynzeel** filing and storage

FOCUS ON CUSTOMER SATISFACTION

Museum Solutions

Bruynzeel

The key issue when designing a museum repository is to preserve an irreplaceable collection. In addition, the collection should be accessible at all times. Bruynzeel has extensive experience in furnishing museum repositories. Our advisors will be happy to help you reach the best solution. A solution that will meet the specific requirements of your collection, its users, and the dynamics of the environment.

Focus on conservation and accessibility

You will discover that our museum solutions ensure optimum conservation, while being extremely accessible at the same time. The choice of the right storage means that the lay-out of the room, and the dimensions and position of the aisles are configured so that the objects are stored as compactly as possible, while being individually accessible, as well as being protected against dirt, dust and damage by transport or vibrations. No matter whether your collection comprises works of art, tapestries, ceramics, furniture, instruments, jewellery, clothes, or natural history artifacts. Bruynzeel will store them. We will think with you, advise you, and provide you with the perfect solution tailored to your museum.

BRUYNZEEL

Solutions to optimise the protection of your collection

ArteStore Terra, pull-out painting frames moved along rails fixed to the floor: with formaldehyde free floor construction

 **bruynzeel** filing and storage

FOCUS ON CUSTOMER SATISFACTION

Museum Solutions

ArteStore Terra,
pull-out painting
frames moved along
rails fixed to the floor



**Pull-out painting frames:
efficient use of space**

A major advantage of pull-out painting frames is that the paintings are easily accessible, while efficient use is made of the available space. If you need to view a certain painting, only the paintings in the frames concerned are moved.

**ArteStore Terra,
pull-out painting frames:
moved along rails fixed to
the floor**

These painting frames also move virtually vibration free and are extremely stable. A steel construction is rarely required, since the guide rails on the ceiling are not weight bearing. With this system, the dimensions of the wire-mesh walls are also matched to the size of the objects and the available space.

Pull-out painting frames can be delivered either in suspended versions, moved along rails fixed to the floor, or moved along the floor on wheels.

**ArteStore Penda,
pull-out painting frames:
suspended version**

Pull-out painting frames move virtually vibration free and are extremely stable. A major advantage of this system is that the floor surface is uninterrupted by rails. This is important if the floor also serves as a transport route. The dimensions of the wire-mesh walls are matched to the size of the objects and the available space. If the floor lacks sufficient load-bearing capacity, the system will be built into a steel construction.

**ArteStore Rota,
pull-out painting frames:
moved along the floor on
wheels**

If customisation is a less important criterium, this system will offer a cost-efficient solution. The extent of vibration depends on the smoothness or roughness of the floor surface. The system is available in standard sizes.



End stops ensure that the frames are stopped gently when returned to their position

**ArteStore Penda, Terra and Rota,
pull-out painting frames**

- Space-saving and easily accessible
- Only a part of the collection is moved
- No air flow around the collection during movement
- Customised

ArteStore Rota,
pull-out painting
frames, moved
along the floor
on wheels:
a cost efficient
solution



STORAGE OF PAINTINGS ARTESTORE PENDA, TERRA AND ROTA PULL-OUT PAINTING FRAMES

Space-saving, low-vibration, accessible

ArteStore Penda,
pull-out painting frames, suspended version:
The double wheels, the buffer wheel and
the extra sprung guide wheel ensure perfect
transport and optimum damping.

Museum Solutions

STORAGE OF PAINTINGS ARTESTORE STATIC PAINTING FRAMES AND COMPACTUS® ARTESTORE MOBILE PAINTING FRAMES

Matching any specific situation



ArteStore static painting frames

- Flexible dimensions
- Extremely stable



Compactus® ArteStore mobile painting frames

- Space-saving and easily accessible
- Available with emission free aluminium floor or formaldehyde free floor construction
- Customised

ArteStore static painting frames: focus on flexibility

Static painting frames are available in different sizes, so that they will flushly fit into the available repository space. They offer a cost-efficient storage solution, suitable for intensive use. These storage solutions are used for temporary storage situations such as transit and quarantine storage or art libraries.

Compactus® ArteStore mobile painting frames: focus on storage capacity

Mobile painting frames, also known as Compactus® ArteStore painting frames, make optimal use of the available space by using only a single aisle. The mobile frames can be moved singly or with more than one at the same time, creating an aisle wherever necessary, thereby virtually doubling your storage capacity.

Compactus® Power³ ArteStore and Compactus® Electro ArteStore: focus on protection

Mobile painting frames can be equipped with an electronic Compactus® Power³ or Compactus® Electro drive. In addition to maximum storage capacity, this will also provide optimal protection of your collection.

- Low-vibration movement of the mobiles thanks to 'soft start' and 'soft stop'
- To guarantee increased protection for your collection, Compactus® Power³ can be linked to security and climate-control systems, such as fire alarms, lighting and ventilation. Automatic reaction of the mobiles to system activation and adjustment of night settings for optimal ventilation can be integrated in the operating software.

Compactus® Power³ ArteStore: increased protection



Compactus® Electro ArteStore

The special painting suspension brackets, mounted in the mesh, ensure secure suspension



Museum Solutions

Compact and Sysco® racks: focus on flexibility

Our rack systems are excellent examples of versatile storage solutions. Whether you choose the open Compact rack or the closed Sysco® rack, these modular systems are available in various sizes, so that they can be tailored around the objects to be stored. The shelves are adjustable per 20 mm, meaning that sections of any size can be created. The contents may be stored safely and practically dust-free behind sliding doors.

Anti-microbial powder coating: for extra protection

Compact and Sysco® racks can be provided with a special anti-microbial powder-coating finish. Ideal for storage that requires extra protection against organisms such as bacteria, fungi, algae and yeast. The anti-microbial powder coating is part of second-degree resistance and minimises the risk of contamination via manual contact.

Compact and Sysco® racks: eye for detail

Compact and Sysco® systems are distinguished by their stability and durability and the attention devoted to detail. The shelves are easily adjustable. The shelf hooks are concealed underneath the shelves so as not to damage the objects. The racks are available as single or double-sided versions and are all fitted with foot plates.



Compact and Sysco® racks

- Available with various dimensions
- Variable section heights
- Tailored to your collection



The Sysco® uprights are available in single-closed or double-closed versions. If required, they can be supplied with perforations.



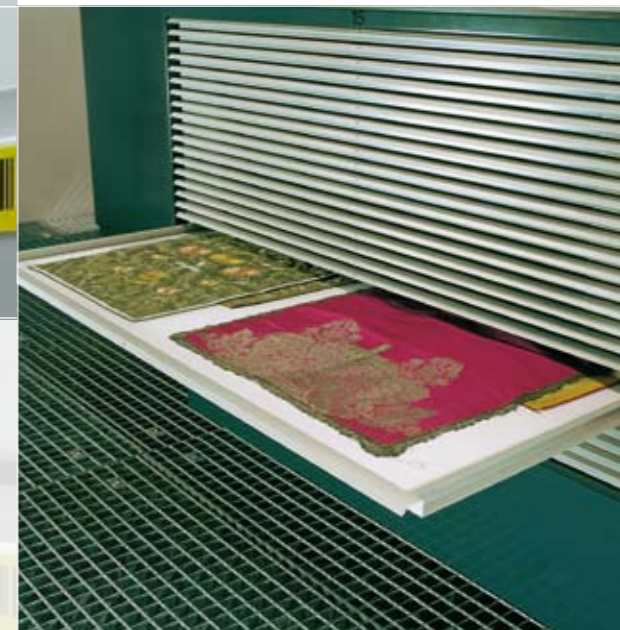
STORAGE OF SMALL OBJECTS
COMPACT RACKS, SYSCO® RACKS
Immediate access to your collection

Open Compact racks

Museum Solutions

STORAGE OF SMALL OBJECTS CABINETS OF DRAWERS

Convenient and dust-proof storage



Cabinets of drawers: focus on protection

Should your collection be stored lying flat? Should it be protected against dust and light? If this is the case, it is best stored in drawers. Drawers are available in a huge range of dimensions, varying in depth, length and in width. Drawers may be pulled out completely, allowing safe arrangement of contents.

Cabinets for storage of prints: highly functional

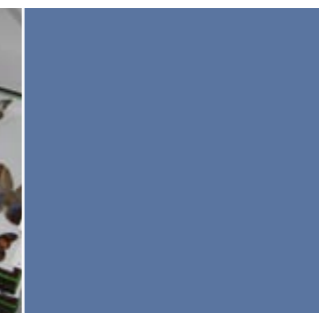
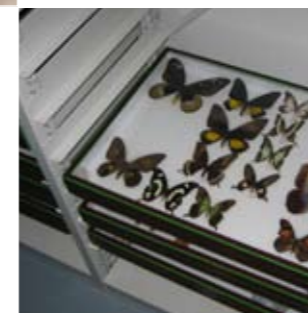
Cabinets for storage of prints have shelves that can be completely slit in and out. They are ideal for individual storage of prints and pastels. A major advantage of this system is that the prints can be transported on the actual shelves. Print cabinets can be closed using sliding doors.

Cabinets of drawers

- Available in a wide range of dimensions
- Protected against dust and light
- Customised



Cabinet for storage of prints



Museum Solutions

STORAGE OF LARGE OBJECTS LONG SPAN SHELVING, CANTILEVER RACKS, PALLET RACKS, PANEL RACKS, CARPET RACKS

Tailored to your collection

Depending on the shape and weight of the objects to be stored, we can offer the safest possible storage solution for these objects.

Panel racks, cantilever racks, carpet racks: a specific solution for any object

For long and flat objects, panel racks will provide a space-saving and safe solution. For long objects, the cantilever racks will prove highly efficient. Carpet racks are used for carpet rolls. If required, they will provide a functional solution for large-sized canvasses.

Long span shelving and pallet racks: stable storage of heavy objects

Long span shelving is used for heavy objects. The long sections are easily accessible, adjustable per 50 mm, and have a load-bearing capacity of several hundreds of kilogrammes.

If the objects are even heavier, pallet racks are ideal. These stable and versatile systems will guarantee safe and compact storage of the heaviest objects.



Cantilever racks



Long span shelving, cantilever racks, pallet racks, panel racks, carpet racks

- Safe storage for objects of any weight and size
- Stable
- Compact
- Customised



Carpet racks

Long span shelving

Panel racks

Pallet racks



Museum Solutions

SPACE-SAVING STORAGE COMPACTUS® MOBILE RACKS

Optimal use of space

Compactus® Power³



Compactus® Electro



Compactus® mobile racks

- Space-saving and easily accessible
- Flexible construction
- Customised

Emission free aluminium floor for optimal conservation

Mobile platforms



Compactus® mobile racks: focus on space saving

Mobile storage solutions offer many advantages over static racks requiring aisles between rows in order to gain access to your collection. Compactus® solutions make optimal use of the available space by using only a single aisle. Every square metre of conditioned storage space is costly. All space-saving possibilities are welcome, either to create extra storage space or to reduce costs for new buildings.

Compactus® Power³ and Compactus® Electro: focus on protection

Mobile racks can be equipped with an electronic Compactus® Power³ or Compactus® Electro drive. In addition to maximum storage capacity, this will also provide optimal protection of your collection.

- Low-vibration movement of the mobiles thanks to 'soft start' and 'soft stop'
- To guarantee increased protection for your collection, Compactus® Power³ can be linked to security and climate-control systems, such as fire alarms, lighting and ventilation.

Compactus® mobile racks: focus on flexibility

Compactus® mobile racks can be used in combination with any construction, such as Compact and Sysco® racks, painting frames, long span shelving, cantilever racks, and carpet racks. They may even be used without any construction, to create mobile platforms. Compactus® mobile racks are customised to suit any particular collection. Even the number of aisles compared to the number of mobile bases varies, in order to achieve an optimal repository interior.

Compactus® Power³: focus on security

To prevent just anybody from gaining access to your collection, different aisles may be assigned to different people or departments. Programmable service tags provide 250 unique security authorisations in order to guarantee secure storage of your collection. These authorisations are easily changed by remote control from your PC.


bruynzeel filing and storage

Bruynzeel Storage Systems bv
Industrieterrein 7
Postbus 7118
5980 AC Panningen - The Netherlands
Tel.: +31 (0)77 306 90 00
Fax: +31 (0)77 307 81 33
www.bruynzeel.org
info@bruynzeel.org


bruynzeel filing and storage

Oaktree House, Waterside
Hanbury Road, Stoke Prior
Bromsgrove B60 4FD - United Kingdom
Tel.: +44 (0)800 220 848
Fax: +44 (0)870 224 0221
www.bruynzeel.co.uk
enquiries@bruynzeel.co.uk

Constructor Polska Sp. z o. o.
Ul. Annapol 4a
03-236 Warsaw – Poland
Tel.: +48 (0)22 210 85 00
Fax: +48 (0)22 210 85 10
www.constructor.pl


bruynzeel filing and storage

Bruynzeel Storage Systems NV/SA
Buro & Design Center B50
Heizel Esplanade
1020 Brussels - Belgium
Tel.: +32 (0)2 479 42 42
Fax: +32 (0)2 479 82 82
www.bruynzeel-storage.systems.be
info@bruynzeel-storage-systems.be


bruynzeel rangements

Bruynzeel Rangements Algérie EURL
No 221 groupe I Douzi III
Bad Ezzouar - BP 428
16131 Alger - Algeria
Tel. + 213 (0)21 203 333
Fax + 213 (0)21 201 139
www.bruynzeel.fr
info@bruynzeel.fr

Constructor GmbH
Liesinger Flurgasse 15
1230 Vienna - Austria
Tel.: +43 (0)1 718 424 80
Fax: +43 (0)1 718 424 850
www.constructor.at
verkauf@constructor.at


bruynzeel rangements

Bruynzeel Rangements SAS
1 rue Alfred Kastler
67201 Eckbolsheim - France
Tel.: +33 (0)3 882 696 00
Fax: +33 (0)3 882 696 01
www.bruynzeel.fr
info@bruynzeel.fr

Constructor Norge AS
Postboks 363
Sandviksveien 36
1323 Høvik - Norway
Tel.: +47 (0)67 112 600
Fax: +47 (0)67 112 601
www.constructor.no


bruynzeel archiv & bürosysteme

Bruynzeel Archiv & Bürosysteme GmbH
Moselstraße 18
41464 Neuss - Germany
Tel.: +49 (0)2131 409 90
Fax: +49 (0)2131 409 9199
www.bruynzeel.de
info@bruynzeel.de

Constructor Sverige AB
Bergsjödalen 60
415 23 Göteborg - Sweden
Tel.: +46 (0)31 771 96 00
Fax: +46 (0)31 771 96 96
www.constructor.se
info.se@constructor.se


Compactus & bruynzeel

Compactus & Bruynzeel AG
Zürcherstrasse 350
8500 Frauenfeld-Switzerland
Tel.: +41 (0)52 724 07 24
Fax: +41 (0)52 724 07 44
www.compactus.ch
info@compactus.ch

Constructor Danmark A/S
Rorupvej 1
4320 Lejre - Denmark
Tel.: +45 (0)46 328 008
Fax: +45 (0)46 328 118
www.constructor.dk

Members of the Constructor Group

FOCUS ON CUSTOMER SATISFACTION