



Dexion (Australia) Pty Limited. ABN 83 000 083 956. Head Office: 23 Tattersall Road, Kings Park NSW 2148. dexion.com.au
Dexion New Zealand. Incorp No. 1856839. Head Office: 423 East Tamaki Road, East Tamaki, Auckland 2013. dexion.co.nz

Whilst the utmost care is taken to ensure the accuracy of the information contained herein, it is provided in the understanding that the company shall under no circumstances be liable for any injuries, expenses or other losses which may in any way be attributable to the use or adoption of such data and/or design details. All dimensions indicated are nominal only. Dexion reserves the right to alter or amend without prior notice data and design details specified herein. Product specifications may vary between regions, Re-Order Code M086. F+S+A/DEX0074



Smart

enough

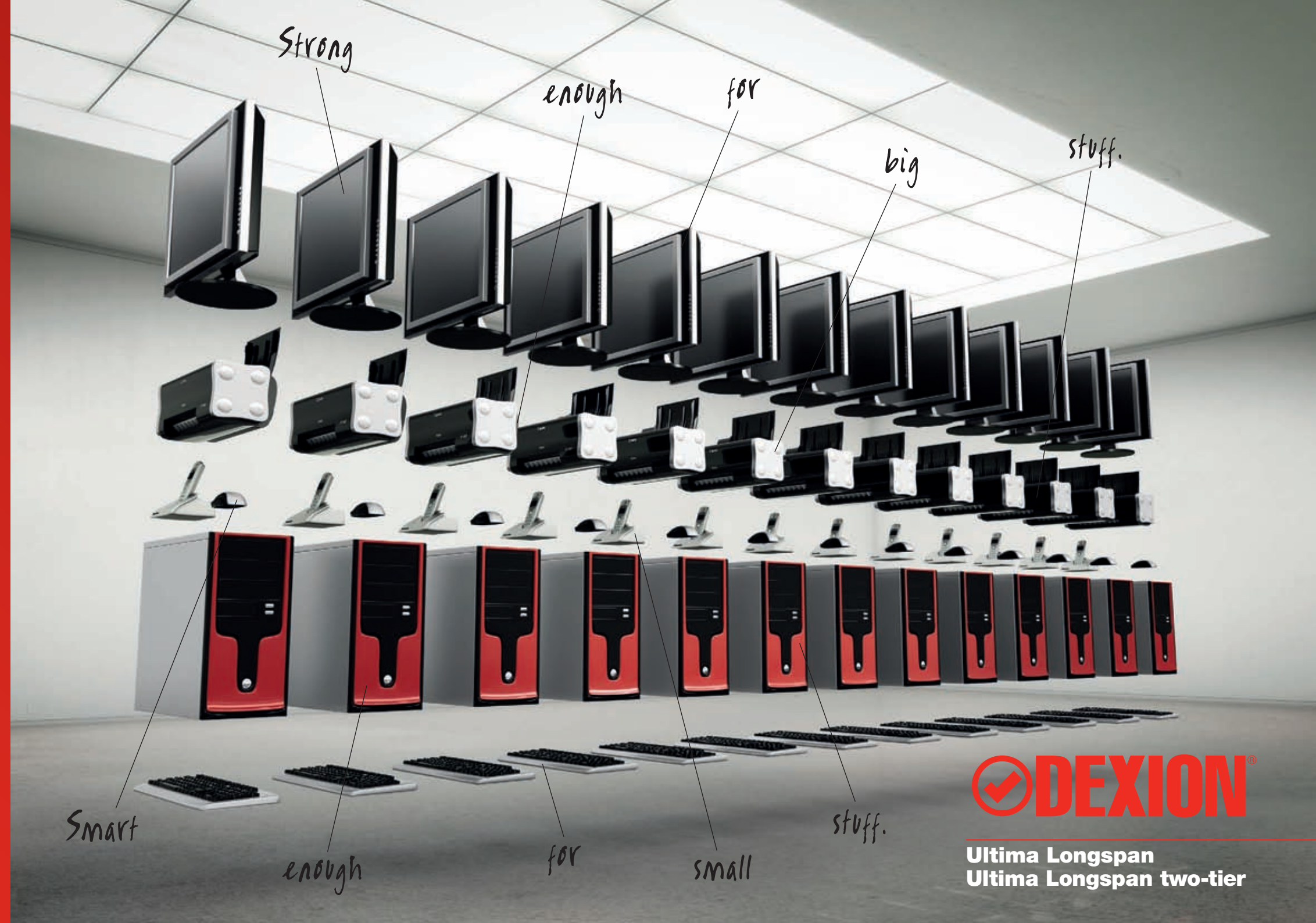
for

small

stuff.



Ultima Longspan
Ultima Longspan two-tier





Build it your way.

Ultima Longspan.

You need:

Something that can handle larger, heavier or awkwardly shaped items. Either a single-tier or high-rise solution to make optimal use of overhead space.

Our solution:

Ultima Longspan is Dexion's most popular hand-loaded solution. Strong and durable, you can assemble or reconfigure it yourself. A little extra shelf depth makes Longspan quite flexible, while the absence of a wall means you can pick from both sides. Compatible with Compactus® mobile storage.

The vital statistics:

Shelf carrying capacity____up to 900kg UDL

Shelving bay carrying capacity____up to 4425kg

Shelving bay clear entry length____up to 2400mm

Shelving bay clear depths____up to 1205mm

Shelving bay heights____up to 5000mm

Beam height____75mm

Beam pitch____50mm





A wealth
of shelf.

Value via
versatility.



Rotating Beam.
The unique one piece
beam rotates giving
you a choice of Flat
Top or Step Top.



Step Top Beam can
accommodate timber
shelving that sits
within the beam
profile, making the
shelf more secure.



Beam safety locks
prevent beams being
accidentally lifted or
dislodged.



Upright splicing
allows for future
extension of the
system.



**Deep flange and
minimal slot sizes.**



Going up, it's twice as good.

Ultima Longspan two-tier.

You need:

A versatile, multi-level application with the strength to handle large, heavy and bulky items.

Our solution:

Longspan two-tier is flexible and robust with a wide variety of applications, such as archives, factories and retail outlets. It's readily customised to specific requirements; bay lengths can be mixed and matched, staircases added, along with pallet gates, bridges and anything else your space needs.

The vital statistics:

Shelf carrying capacity_____up to 900kg UDL

Shelving bay carrying capacity_____up to 4425kg

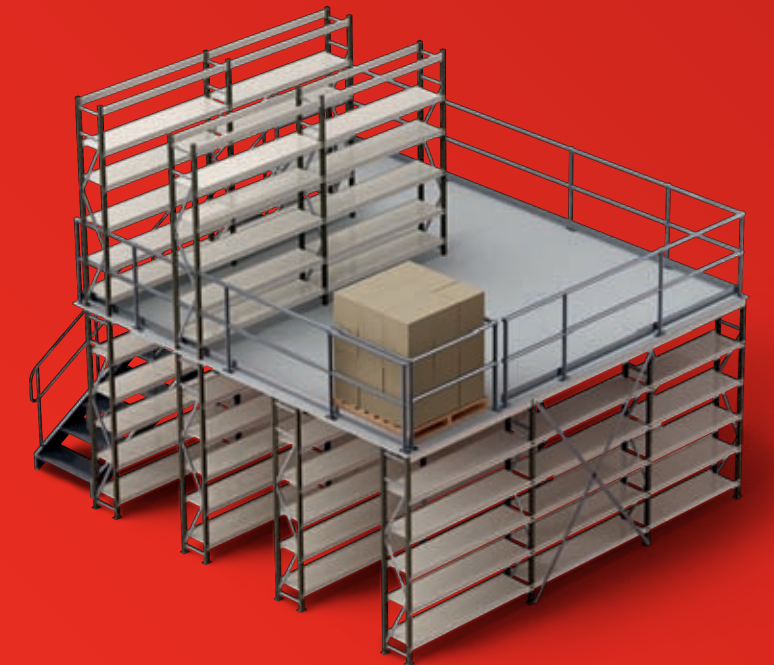
Shelving bay clear entry length_____up to 2400mm

Shelving bay clear depths_____up to 1205mm

Shelving bay heights_____up to 5000mm

Beam height_____75mm

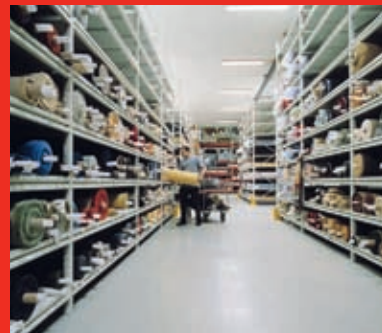
Beam pitch_____50mm





Versatile configurations.

Utilise
your way.



**Handle long and
awkward items.**



**Slanted shelf allows
for easy presentation.**



**Shelves can span
uninterrupted
allowing maximum
storage.**



**Longspan offers
deeper storage bays
as intermediate
frames are eliminated.
Maximise use of
space and don't
pay for frames you
don't need.**

Customised or
off-the-shelf.
Have it your way.



Mesh backing.



Mesh shelf -
galvanised or powder
coated.



Steel shelf.



Packing and work
bench.



Timber shelf.



Shelf dividers.



Maxi bins.



Pallet gate.



Balustrades.



Stairs.



Plywood floor.



Steel grate floor.

Specifications.

Single-Tier & Two-Tier

Specifications	Dimensions
Shelf carrying capacity	Up to 900kg UDL per pair of beams*
Shelving bay carrying capacity	Up to 4425kg*
Shelving bay clear entry	900mm, 1200mm, 1800mm, 2100mm, 2400mm
Shelving bay clear depths	405mm, 455mm, 505mm, 605mm, 765mm, 905mm, 1205mm
Shelving bay heights	1200mm, 2000mm, 2200mm, 2500mm, 3000mm, 3500mm, 4000mm, 4500mm, 5000mm
Beam height	75mm
Beam pitch	50mm
Colour	Available in two tone finish - Stone White and Anthracite

Floor configurations

- Aisle floor - Shelving on both levels and flooring in the aisles only.
- Full floor - Shelving on the ground level only and full flooring on the upper level for storage.

UDL - Uniformly Distributed Load. *Beam and bay capacities vary, contact your Dexion supplier for specific maximum loads based on your storage requirements.